

Peshtigo River Watershed

Hydrologic Unit Code: 04030105

For more information, see the USEPA "Surf Your Watershed" website at:

cfpub.epa.gov/surf/huc.cfm?huc_code=04030105

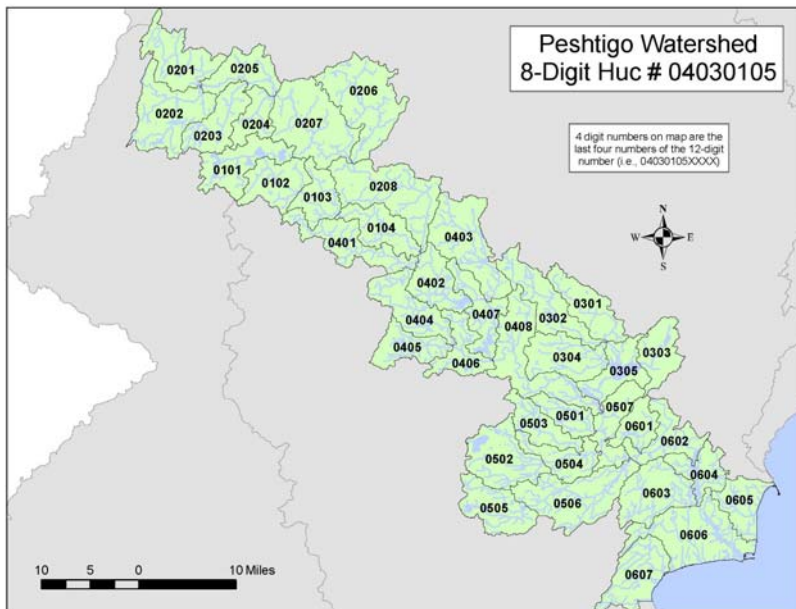
The Peshtigo River Watershed is part of the WDNR Upper Green Bay Management Area. For more information, see the Wisconsin Department of Natural Resources' "Wisconsin's Basins" website at dnr.wi.gov/org/gmu/gmu.html

Watershed Groups

- Marinette County Land & Water Conservation — www.marinettecounty.com/departments/?department=a67be5f0c03a&subdepartment=3f4f12eefdd5

Watershed Overview

- The watershed flows into Green Bay in Wisconsin.
- The major waterways in the watershed include the Lower Peshtigo River, the Little Peshtigo River, The Middle Peshtigo and Thunder River, and the Upper Peshtigo River.
- The watershed has three listed impaired waters.
- Marinette is the only urbanized area in the watershed.
- Wildlife include Black Bear, White-tailed Deer, Turkey, Ring-necked Pheasant, Ruffed Grouse, Waterfowl, Geese, Beaver, Mink, Otter, Timber Wolves, Elk, Trumpeter Swans, Eagle, Osprey, Northern Goshawk, and Shorebirds.
- Maple-basswood is the most common forest type and the tree species with the greatest volume in the basin is Hard Maple followed by aspen, White and Red Pine, Soft Maple and Balsam Fir.
- The Nature Conservancy identified the following critical habitats and ecosystems in the Peshtigo River: Great Lakes Shoreline Cattail - Bulrush Marsh; Silver Maple - Elm - (Cottonwood) Forest; White Pine - Red Oak Forest; Central Wet-Mesic Tallgrass Prairie; lake plain wetland lakes; large rivers on till plain and lake plain; cool/cold headwaters; large, cool/coldwater rivers in outwash, end moraine, and ice contact; large, headwater lakes in ground moraine, outwash, and ice contact; low gradient tributary streams on west Green Bay till plain; riverine coastal marsh; and spring-fed headwater lakes.
- The Nature Conservancy has identified the following critical species in the Peshtigo River watershed: Wood Duck; Le Conte's Sparrow; Ruffed Grouse; American Bittern; Whip-poor-will; Veery; Black Tern; Northern Harrier; Marsh Wren; Sedge Wren; Black-billed Cuckoo; Northern Bobwhite; Eastern Wood-Pewee; Yellow Rail; Cerulean Warbler; Blackburnian Warbler; Chestnut-sided Warbler; Black-throated Green Warbler; Least Flycatcher; Willow Flycatcher; Bald Eagle; Wood Thrush; Baltimore Oriole; Hooded Merganser; Wild Turkey; Black-and-white Warbler; Mourning Warbler; Rose-breasted Grosbeak; American Woodcock; Clay-colored Sparrow; Field Sparrow; Forster's Tern; Golden-winged Warbler; Blue-winged Warbler; Nashville Warbler; Warbling Vireo; and Canada Warbler.

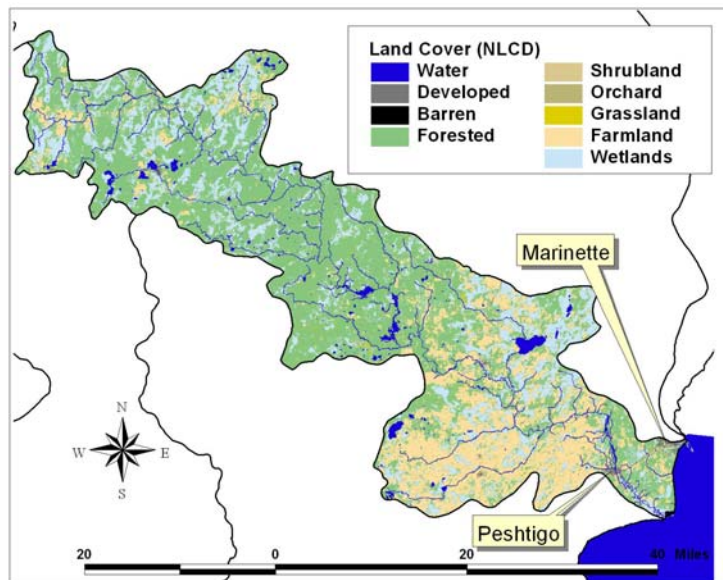


Subwatersheds of the Peshtigo River Watershed

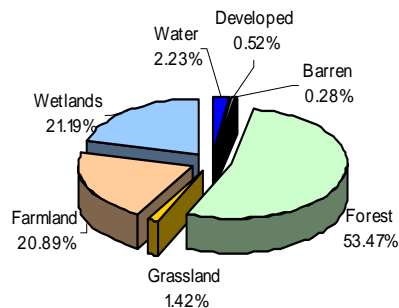
- 0101 Headwaters Rat River
- 0102 Upper Rat River
- 0103 Middle Rat River
- 0104 Lower Rat River
- 0201 North Branch Peshtigo River
- 0202 South Branch Peshtigo River
- 0203 Otter Creek
- 0204 Camp Eight Creek
- 0205 Kersten Creek-Peshtigo River
- 0206 Armstrong Creek
- 0207 Catwillow Creek-Peshtigo River
- 0208 Swede John Creek-Peshtigo River
- 0301 Upper Middle Inlet
- 0302 Middle Inlet
- 0303 Upper Inlet
- 0304 Lower Middle Inlet
- 0305 Lake Noquebay-The Outlet
- 0401 Otter Creek
- 0402 Caldron Falls Reservoir-Peshtigo River
- 0403 Eagle Creek
- 0404 North Fork Thunder River
- 0405 South Fork Thunder River
- 0406 Thunder River
- 0407 High Falls Reservoir-Peshtigo River
- 0408 Medicine Brook-Peshtigo River
- 0501 Left Foot Creek
- 0502 Headwaters South Branch Beaver Creek
- 0503 North Branch Beaver Creek
- 0504 South Branch Beaver Creek
- 0505 Headwaters Little Peshtigo River
- 0506 Little Peshtigo River
- 0507 Peterman Brook-Peshtigo River
- 0601 Gravelly Brook
- 0602 Potato Rapids Dam-Peshtigo River
- 0603 Trout Creek
- 0604 Peshtigo Dam-Peshtigo River
- 0605 Little River-Frontal Lake Michigan
- 0606 Peshtigo River-Frontal Lake Michigan
- 0607 Thomas Slough-Frontal Lake Michigan

Watershed Activities

- The following are objectives for the Upper Green Bay management Basin, which includes the Peshtigo River watershed:
 - ◊ Target the West Shore of Green Bay as a high priority for habitat protection
 - ◊ Protect shoreland habitat and water quality through water regulation & zoning
 - ◊ Work with local communities in developing “smart growth” plans & promoting wise land use and zoning
 - ◊ Complete a comprehensive fisheries plan for the basin, focusing on the Oconto, Menominee, and Peshtigo Rivers and Lake Michigan, including addressing invasive exotic species
 - ◊ Encourage sound forestry practices on public and private land and identify and manage terrestrial invasive exotic species
 - ◊ Enhance educational activities for forestry, water quality, wildlife management, and healthy ecosystem



Land Cover: Peshtigo River Watershed



Total Acreage = 1165 sq. miles

Between 1996 and 2001, there has been a slight increase in developed land, farmland, and forest and a slight decrease in grassland and wetlands.

Data Sources. Land cover map and percentages: National Land Cover database, 1992 (edc.usgs.gov/products/landcover/nlcd.html); Land use change: NOAA Coastal Change Analysis Program, 1996 and 2001 (www.csc.noaa.gov/crs/lca/ccap.html); Total Maximum Daily Load (TMDL) Impaired Waters: Surf Your Watershed (www.epa.gov/surf)

Impaired (303d) Waters

Waterbody Name	Impairment
Bass Lake	Dissolved Oxygen, Phosphorous, Winter Kills
Gilas Lake	Mercury Fish Consumption Advisory
Noquebay Lake	Mercury Fish Consumption Advisory
Peshtigo River at Caldron Falls Flowage	Mercury Fish Consumption Advisory
Peshtigo River at High Falls Flowage	Mercury Fish Consumption Advisory
Peshtigo River at Peshtigo Flowage	Mercury Fish Consumption Advisory
Green Bay—South of Marinette and its tribs	Mercury Fish Consumption Advisory
Lower Menominee AOC	Arsenic, Mercury Fish Consumption Advisory, PAHs