

Manistee River Watershed

Hydrologic Unit Code: 04060103

For more information, see the USEPA "Surf Your Watershed" website at cfpub.epa.gov/surf/huc.cfm?huc_code=04060103

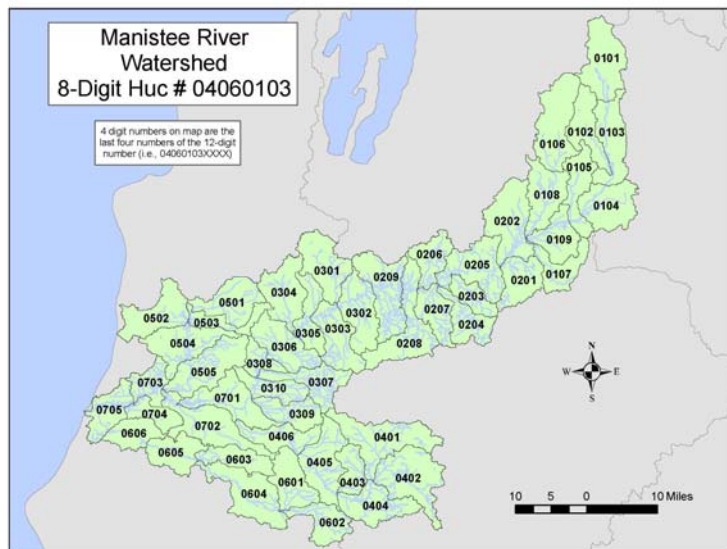
Contact the Michigan Department of Environmental Quality at 517-335-6969 to request a copy of report number MI/DEQ/WD-04/031 "A Biological Survey of the Lower Manistee River and Selected Tributaries in the Counties of Manistee, Wexford, Missaukee, and Kalkaska, June 6 - August 17, 1999" and report number MI/DEQ/WD-04/017, "A Biological Survey of the Upper Manistee River and Selected Tributaries, Crawford County and Kalkaska County, August 17 - September 2, 1999".

Watershed Management Plans

- Little Manistee River — Conservation Resource Alliance
- Manistee River — Conservation Resource Alliance

Watershed Organizations

- Upper Manistee River Association
- Conservation Resource Alliance — www.rivercare.org
- Little River Band of Ottawa Indians — www.itcml.org/thehistorytribal7.html
- Huron Pines Resource Conservation & Development Council — www.huronpines.org
- Northwest Michigan Council of Governments — www.nwm.org
- Little Manistee Watershed Conservation Council - www.lmwcc.org



Subwatersheds of the Manistee River Watershed

- | | |
|--|--|
| 0101 Frenchman Creek-Manistee River | 0308 Eddington Creek-Manistee River |
| 0102 Goose Creek | 0309 Peterson Creek |
| 0103 Lost Lake-Manistee River | 0310 Hinton Creek-Manistee River |
| 0104 Portage Creek-Manistee River | 0401 North Branch Pine River |
| 0105 Black Creek-Manistee River | 0402 East Branch Pine River |
| 0106 Manistee Lake-North Branch Manistee River | 0403 Coe Creek |
| 0107 Big Cannon Creek | 0404 Beaver Creek-Pine River |
| 0108 North Branch Manistee River | 0405 Poplar Creek-Pine River |
| 0109 Big Devil Creek-Manistee River | 0406 Pine River |
| 0201 Little Cannon Creek | 0501 Dutchman Creek-Bear Creek |
| 0202 Maple Creek-Manistee River | 0502 Little Bear Creek |
| 0203 Ham Creek | 0503 Lemon Creek-Bear Creek |
| 0204 Hopkins Creek | 0504 Little Beaver Creek-Bear Creek |
| 0205 Hopkins Creek-Manistee River | 0505 Bear Creek |
| 0206 Fife Lake Outlet | 0601 Twin Creek |
| 0207 Chase Creek-Manistee River | 0602 Lincoln Creek-Little Manistee River |
| 0208 Manton Creek-Manistee River | 0603 Stronach Creek |
| 0209 Silver Creek-Manistee River | 0604 Elbow Lake-Little Manistee River |
| 0301 Anderson Creek | 0605 Tank Creek-Little Manistee River |
| 0302 Soper Creek-Manistee River | 0606 Little Manistee River |
| 0303 Cole Creek-Manistee River | 0701 Tippy Dam Pond-Manistee River |
| 0304 Fletcher Creek | 0702 Pine Creek-Manistee River |
| 0305 Burkett Creek-Manistee River | 0703 Larson Creek-Manistee River |
| 0306 Hodenpyl Dam Pond-Manistee River | 0704 Claybank Creek-Manistee River |
| 0307 Slagle Creek | 0705 Manistee River |

Watershed Overview

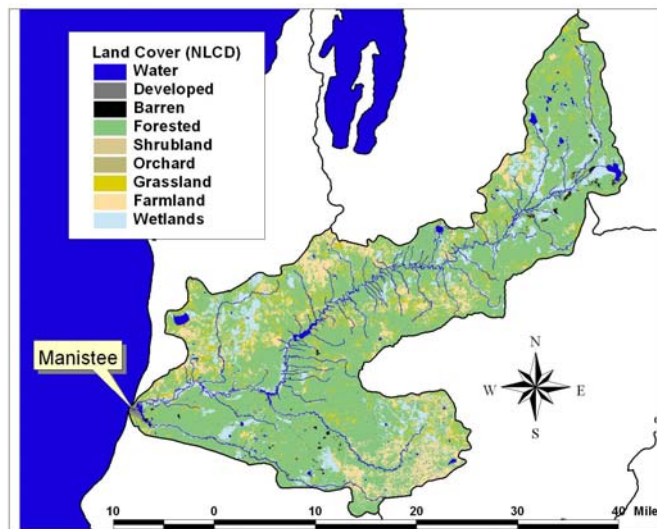
- The Manistee River watershed covers 1906 square miles, with less than half of mile of Lake Michigan shoreline.
- Its predominant land use is forest.
- The watershed has just over 15 square miles of inland lakes.
- It has 833 miles of waterways, 93 percent of which have been assessed.
- Three waterways are TMDL listed waterways. Two are listed for one contaminant and one is listed for three contaminants.
- The Manistee is one of the most stable, high-quality, coldwater streams in the country. It is a groundwater-driven stream.
- Excessive sediment is a primary problem in the watershed, affecting fish reproduction, alters channel morphology, and impairs aquatic invertebrates. The primary sources are erosion from degraded streambanks and poorly designed stream crossings.
- The Nature Conservancy identified the following critical ecological resources in the watershed:
 - ◊ The Little Manistee River has Great Lakes Leatherleaf Intermittent Wetland.
 - ◊ Critical communities of the Lower Manistee River include Great Lakes Hemlock - Beech - Hardwood Forest.
- Eastern Massasauga is found on the Manistee River.
- The river is designated as a natural river.

Watershed Activities

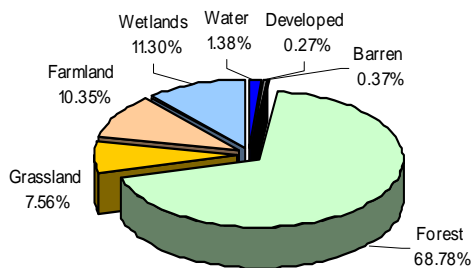
- Watershed Restoration work on the Manistee River is carried out by a diverse group of partners organized as members of the Upper Manistee River Restoration Committee. This committee is administered by Huron Pines RC&D and has actively worked on stabilizing streambanks, restoring access sites, and creating aquatic habitat.
- The Little River Band of Ottawa Indians received one of the first 20 national watershed grants to support their efforts to restore and monitor the water quality of the Manistee River.
- The Little River Band of Ottawa Indians received a 319 grant to address four road-stream crossings that are failing, improve access to the river's edge, and reclaim a lake sturgeon spawning ground.
- Targeted streambanks and road/stream crossings within the Bear Creek Watershed will be repaired.

Impaired (303d) Waters

Waterbody	Impairment
Anderson Creek	Mercury
Lake Margrethe	Mercury (Fish Tissue)
Manistee Lake	Pathogens, PCB Fish Consumption Advisory
Manistee River Watershed	PCBs



Land Cover: Manistee River Watershed



Total Acreage: 1906 sq. miles
Between 1996 and 2001, there has been a slight increase in developed land, and wetland and a slight decrease in cultivated land, grassland, and forest.

Data Sources. Land cover map and percentages: National Land Cover database, 1992 (edc.usgs.gov/products/landcover/nlcd.html); Land use change: NOAA Coastal Change Analysis Program, 1996 and 2001 (www.csc.noaa.gov/crs/lca/ccap.html); Total Maximum Daily Load (TMDL) Impaired Waters: Surf Your Watershed (www.epa.gov/surf)