

# Lower Grand River Watershed

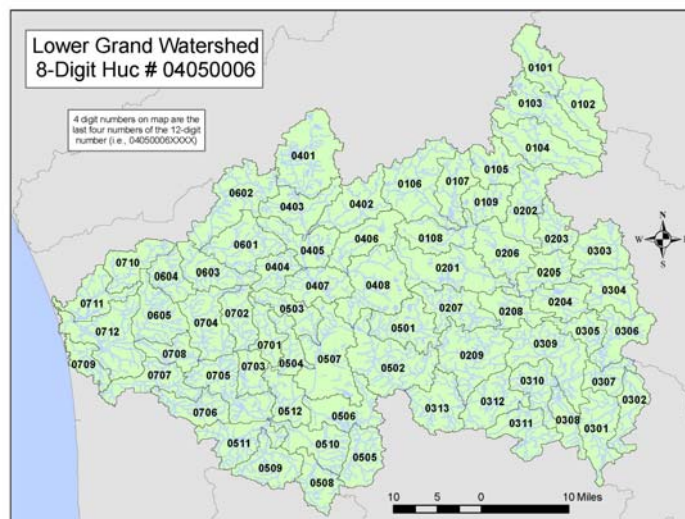
Hydrologic Unit Code: 04050006

For more information, see the USEPA "Surf Your Watershed" website at: [cfpub.epa.gov/surf/huc.cfm?huc\\_code=04050006](http://cfpub.epa.gov/surf/huc.cfm?huc_code=04050006) or contact the Michigan Department of Environmental Quality at 517-335-6969 to request a copy of the following reports:

- Flat River (2003): MI/DEQ/WD-03/130
- Rogue River (2003): MI/DEQ/WD-03/129
- Plaster Creek (2001): MI/DEQ/SWP-01/107

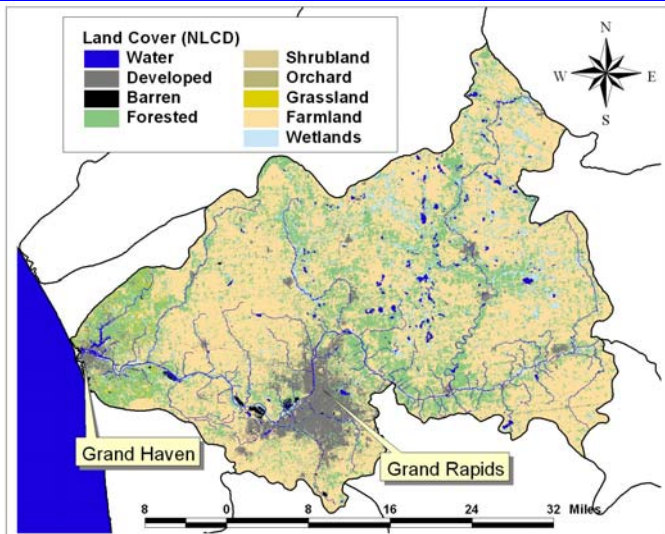
## Watershed Management Plans

- Hager Creek — Ottawa County Parks & Recreation Commission
- Plaster Creek — Kent County Drain Commission
- Spring Lake — Spring Lake Lake Board
- Buck Creek — Grand Valley Metro Council
- Crockery Creek — Muskegon Conservation District
- Rogue River — Grand Valley Metro Council and GVSU/AWRI
- Sand Creek — Grand Valley Metro Council and GVSU/AWRI
- Upper and Lower Grand River -- Grand Valley State University and Annis Water Resources Institute

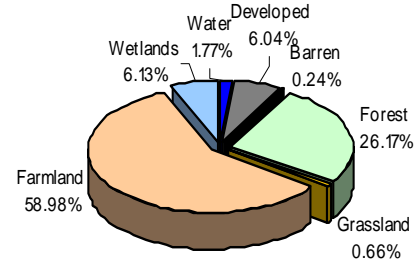


### Subwatersheds of the Lower Grand River Watershed

- |  |                                      |
|--|--------------------------------------|
| 0101 Clear Lake-Black Creek              | 0405 Ball Creek-Rogue River          |
| 0102 Fifth Lake                          | 0406 Cedar Creek                     |
| 0103 Townline Creek-Flat River           | 0407 Freska Lake-Rogue River         |
| 0104 Mud Lake-Flat River                 | 0408 Stegman Creek-Rogue River       |
| 0105 Hunter Lake-Flat River              | 0501 Bear Creek                      |
| 0106 Alder Creek Drain-Black Creek       | 0502 Egypt Creek-Grand River         |
| 0107 Clear Creek                         | 0503 Mill Creek                      |
| 0108 Coopers Creek                       | 0504 Indian Mill Creek               |
| 0109 Perch Lake-Flat River               | 0505 Headwaters Plaster Creek        |
| 0201 Wabasis Creek                       | 0506 Plaster Creek                   |
| 0202 County Farm Pond-Dickerson Creek    | 0507 Lamberton Creek-Grand River     |
| 0203 Twin Lakes-Dickerson Creek          | 0508 Sharps Creek-Buck Creek         |
| 0204 Long Lake                           | 0509 East Branch Rush Creek          |
| 0205 Dickerson Creek                     | 0510 Buck Creek                      |
| 0206 Sanderson Lake-Flat River           | 0511 Rush Creek                      |
| 0207 Seely Creek                         | 0512 Walker-Grand River              |
| 0208 Honey Lake-Flat River               | 0601 North Branch Crockery Creek     |
| 0209 Flat River                          | 0602 Eastland Drain-Crockery Creek   |
| 0301 Taylor Drain-Libhart Creek          | 0603 Rio Grande Creek-Crockery Creek |
| 0302 Libhart Creek                       | 0604 Lawrence Drain-Crockery Creek   |
| 0303 Bacon Creek-Prairie Creek           | 0605 Crockery Creek                  |
| 0304 Ross and Branch Drain-Prairie Creek | 0701 East Fork                       |
| 0305 Bow Pond                            | 0702 Headwaters Sand Creek           |
| 0306 Prairie Creek                       | 0703 Sand Creek                      |
| 0307 Dry Creek-Grand River               | 0704 Dear Creek                      |
| 0308 Sessions Creek                      | 0705 Ottawa Creek-Grand River        |
| 0309 Bellamy Creek-Grand River           | 0706 Bass Creek                      |
| 0310 Crooked Creek-Grand River           | 0707 Bass River                      |
| 0311 Lake Creek                          | 0708 Jubb Bayou-Grand River          |
| 0312 Toles Creek-Grand River             | 0709 Pottawatomie Bayou              |
| 0313 Lee Creek-Grand River               | 0710 Norris Creek                    |
| 0401 Hickory Creek-Rogue River           | 0711 Spring Lake                     |
| 0402 Duke Creek                          | 0712 Grand River                     |
| 0403 Spring Creek-Rogue River            |                                      |
| 0404 Nash Creek                          |                                      |



Land Cover: Lower Grand River Watershed



Watershed size: 2014 sq. miles

*Between 1996 and 2001, there has been a slight increase in developed land and cultivated land and a slight decrease in forest and grassland.*

### Watershed Groups

- Ottawa County Parks & Recreation Commission — [www.co.ottawa.mi.us/parks](http://www.co.ottawa.mi.us/parks)
- Kent County Drain Commission — [www.accesskent.com/YourGovernment/DrainCommissioner/drain\\_index.htm](http://www.accesskent.com/YourGovernment/DrainCommissioner/drain_index.htm)
- West Michigan Environmental Action Council — [www.wmeac.org](http://www.wmeac.org)
- The Lower Grand River 319 Project, Grand Valley State University Annis Water Resources Institute — [www.qvsu.edu/wri/isc/lowgrand](http://www.qvsu.edu/wri/isc/lowgrand)

### Watershed Overview

- Almost 60 percent of the land use is agricultural.
- Grand Rapids and Grand Haven are the major urban areas in the watershed.
- The Grand River Watershed is the largest watershed in the State of Michigan. The watershed has been divided into two parts, the Lower Grand River Watershed and the Upper Grand River Watershed. The Lower Grand River Watershed covers ten counties.
- The Nature Conservancy identified the critical ecological resources in the watershed: The Rogue River has White Oak - Red Oak / Early Meadow-Rue Forest; The Saul Lake Bog is a Leatherleaf Bog; Zeigenfuss Lake/Greenville has White Pine - White Oak Forest; and The Rogue River has small to medium-sized tributary streams in end moraine and outwash

### Watershed Activities

A Watershed Management Plan was developed for the Lower Grand River by the Annis Institute. Goals of the plan include:

- Maintain and improve water quality by promoting sound land management decisions.
- Assess relationships between water quality and storm water runoff by developing guidelines for stormwater management to reduce impacts of urbanization.
- Preserve and restore, coldwater fisheries, and reintroduce indigenous game fish species where possible.
- Provide for flood protection, minimize risk of flooding, and assess necessity of flood control improvements.
- Ensure public safety in recreational opportunities in surface waters.
- Summary of Upper and Lower Grand WMP?**

### Impaired (303d) Waters

Waterbody Name	Impairment
Bills Lake	Mercury (Fish Tissue)
Buck Creek	Pathogens
Deer Creek (Watershed)	Dissolved Oxygen, Fish Kills, Nuisance Plant Growths, Phosphorous, Untreated Sewage Discharges, Pathogens
Flat River	PCB Fish Consumption Advisory
Grand River	Pathogens, Mercury
Grand River Grand Haven Boaters Park Beach	Pathogens
Grand River Watershed	Pathogens
Grand River and Red Cedar River	PCB Fish Consumption Advisory, Mercury (Fish Tissue)
Indian Mill Creek	Macroinvertebrate Community Rated Poor
Lincoln Lake	Mercury (Fish Tissue)
Lincoln Lake Pine Resort Beach	Pathogens
Long Lake	Mercury (Fish Tissue)
Morrison Lake	Algal Blooms, Phosphorous, PCB Fish Consumption Advisory
Rainbow Lake	Mercury (Fish Tissue)
Reeds Lake	PCB Fish Consumption Advisory Fish Tissue (Mercury)
Unnamed Tributary To Grand River	Fish Community Rated Poor
Wabasis Lake	Mercury (Fish Tissue)
Lake Michigan Rosy Mound Beach	Pathogens

Data Sources. Land cover map and percentages: National Land Cover database, 1992 ([edc.usgs.gov/products/landcover/nlcd.html](http://edc.usgs.gov/products/landcover/nlcd.html)); Land use change: NOAA Coastal Change Analysis Program, 1996 and 2001 ([www.csc.noaa.gov/crs/lca/ccap.html](http://www.csc.noaa.gov/crs/lca/ccap.html)); Total Maximum Daily Load (TMDL) Impaired Waters: Surf Your Watershed ([www.epa.gov/surf](http://www.epa.gov/surf))