

Duck-Pensaukee Watershed

Hydrologic Unit Code: 04030103

For more information, see the USEPA "Surf Your Watershed" website at

http://cfpub.epa.gov/surf/huc.cfm?huc_code=04030103

The Wisconsin Department of Natural Resources manages the Duck-Pensaukee watershed in two integrated management areas. The northern portion is managed as part of the Upper Green Bay Basin and the southern portion as part of a larger Lower Fox River basin. For more information, see the Wisconsin Department of Natural Resources "Wisconsin's Basins" website at <http://dnr.wi.gov/org/gmu/gmu.html>.

Watershed Groups

- Duck Creek Watershed Priority Project, Outagamie County Land Conservation Department — www.co.outagamie.wi.us/landcons/DAA.html
- Wisconsin Land & Water Conservation Association, Inc. — www.wlwca.org
- Pensaukee River Priority Watershed Project — www.co.shawano.wi.us/subwebs/pnd/plan_dev/Land%20Conserv/Pensaukee/pensaukee_home.htm
- Oconto County Conservation Department — www.co.oconto.wi.us/departments.asp?d_id=2043

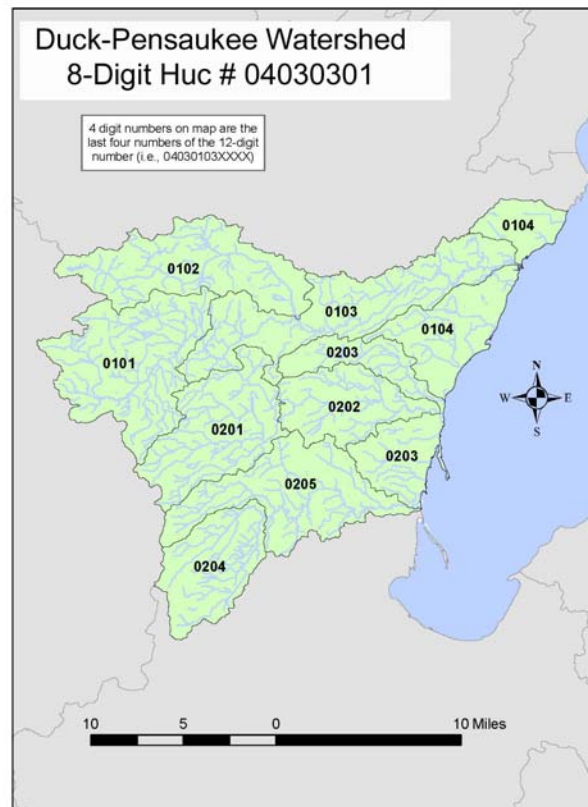
Watershed Overview

- The Duck-Pensaukee watershed covers approximately 490 square miles.
- There are approximately 35 miles of Lake Michigan shoreline.
- Green Bay is the sole urbanized area in the watershed.
- Coastal wetlands are an important feature of the watershed.
- Groundwater is the source of potable water for most residents within the Duck-Pensaukee watershed leading to a drop in groundwater levels. This caused suburban areas to seek direct withdrawals from Lake Michigan.

Watershed Activities

The following are objectives for the Upper Green Bay management Basin, which includes a significant portion of the Duck-Pensaukee watershed:

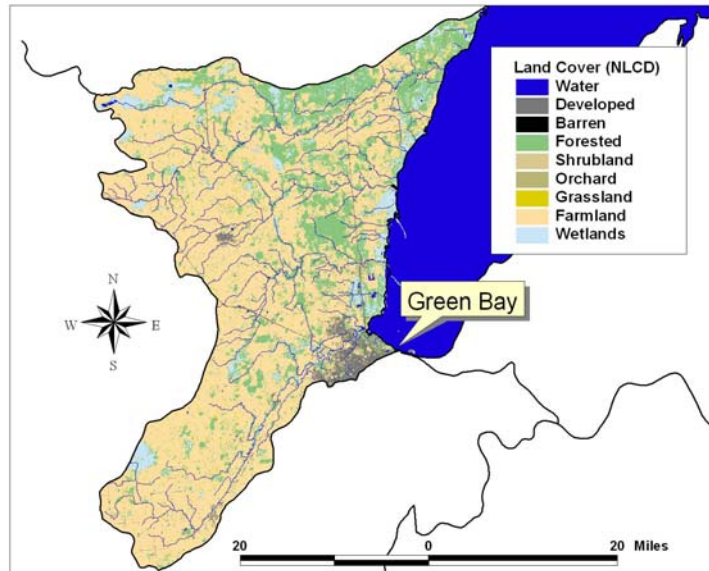
- Target the West Shore of Green Bay as a high priority for habitat protection.
- Implement the DNR's 50 year Land Legacy Study, an acquisition plan for the state.
- Protect shoreland habitat and water quality through water regulation and zoning.
- Work with local communities in developing "smart growth" plans & promoting wise land use and zoning.
- Complete a comprehensive fisheries plan for the basin.
- Complete the Master Plan for the Governor Tommy G. Thompson Centennial State Park.
- Encourage sound forestry practices on public and private land and identify and manage terrestrial invasive exotic species.
- Enhance educational activities for forestry, water quality, wildlife management, healthy ecosystem.
- The Oneida are leaders in the Duck Creek watershed, which runs through the reservation.



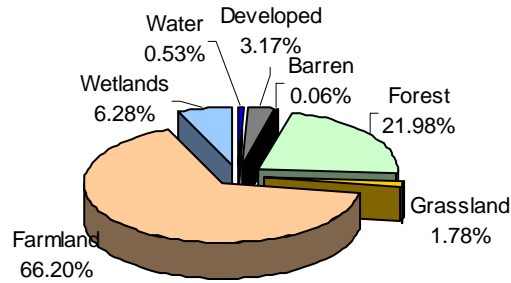
Subwatersheds of the Duck-Pensaukee Watershed

- 0101 Headwaters Pensaukee River
- 0102 North Branch Pensaukee River
- 0103 Pensaukee River
- 0104 Kirchner Creek-Frontal Green Bay
- 0201 Headwaters Little Suamico River
- 0202 Little Suamico River
- 0203 Tibbet Creek-Frontal Green Bay
- 0204 South and West Branches of the Suamico River
- 0205 North Branch Suamico River-Suamico River

Data Sources. Land cover map and percentages: National Land Cover database, 1992 (<http://edc.usgs.gov/products/landcover/nlcd.html>); Land use change: NOAA Coastal Change Analysis Program, 1996 and 2001 (<http://www.csc.noaa.gov/crs/lca/ccap.html>); Total Maximum Daily Load (TMDL) Impaired Waters: Surf Your Watershed (www.epa.gov/surf)



Land Cover: Duck-Pensaukee Watershed



Watershed Size: 490 sq. miles

Between 1996 and 2001, there has been a slight increase in developed land and slight decreases in grassland, and forest.

Impaired (303d) Waters

Waterbody Name	Impairment
Duck Creek * (1)	Dissolved Oxygen, Phosphorus, Sediment
Green Bay - South Of Marinette And Its Tribs Including The Menominee, Oconto, Fox & Peshtigo Rivers From Their Mouths To The First Dam	Mercury Fish Consumption Advisory
Green Bay AOC (Inner Bay) (1)	Phosphorus, Dissolved Oxygen, PCB Fish Consumption Advisory
Lake Michigan	Mercury Fish Consumption Advisory, PCB Fish consumption Advisory
Neenah Slough	Dissolved Oxygen, PCB Fish Consumption Advisory, Phosphorus
Trout Creek (2)	Dissolved Oxygen, Phosphorus, Sediment