

## Cedar-Ford Watershed

Hydrologic Unit Code: 04030109

For more information, see the USEPA "Surf Your Watershed" website at [cfpub.epa.gov/surf/huc.cfm?huc\\_code=04030109](http://cfpub.epa.gov/surf/huc.cfm?huc_code=04030109) or contact the Michigan Department of Environmental Quality at 517-335-6969 to request a copy of report number MI/DEQ/WB-05/038, "A Biological Survey of the Big Cedar, Bark, and Ford River Watersheds Located in Delta and Menominee Counties, 2000."

## Watershed Groups

- Friends of the Cedar River
- Central Lake Superior Watershed Partnership — [www.michigan.gov/documents/deq/ess-nps-fs-central-lake-superior\\_208575\\_7.pdf](http://www.michigan.gov/documents/deq/ess-nps-fs-central-lake-superior_208575_7.pdf)

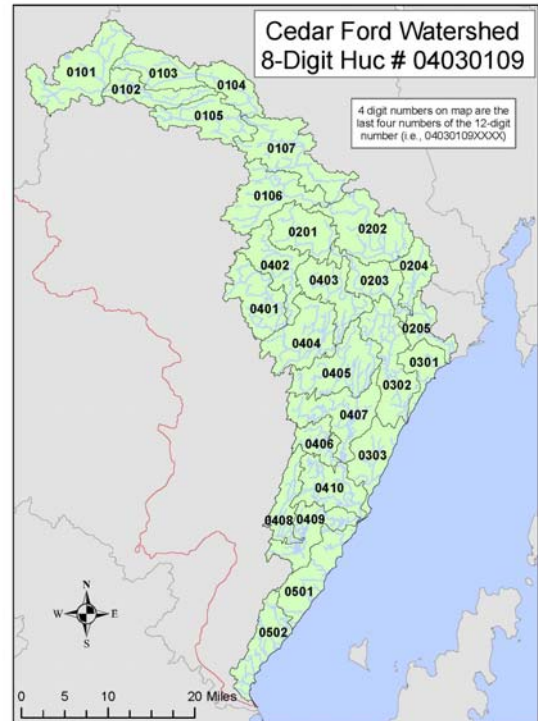
## Watershed Overview / Ecology / Biodiversity

- The Cedar-Ford watershed covers 1029 square miles with almost 53 miles of Lake Michigan shoreline.
- There are many large, privately held hunting camps and industrial/state forest land.
- Fishing recreation, deer and grouse hunting, snow mobile touring, and cross country skiing are some of the important basin recreational activities.

## Watershed Priorities

### Areas of focus include:

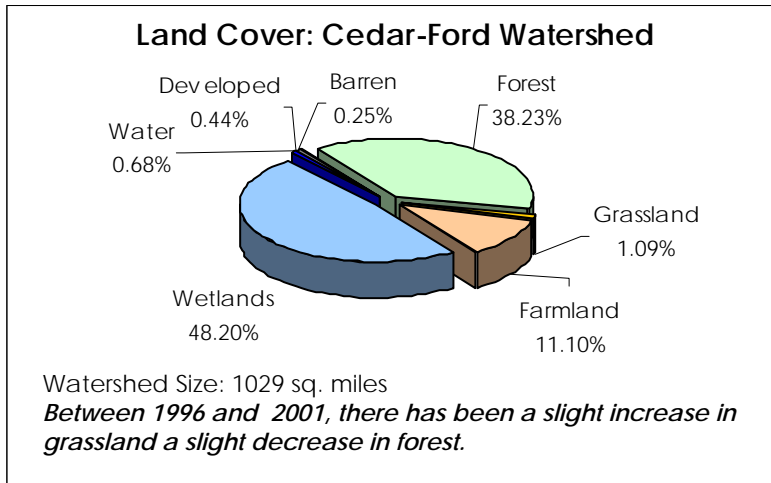
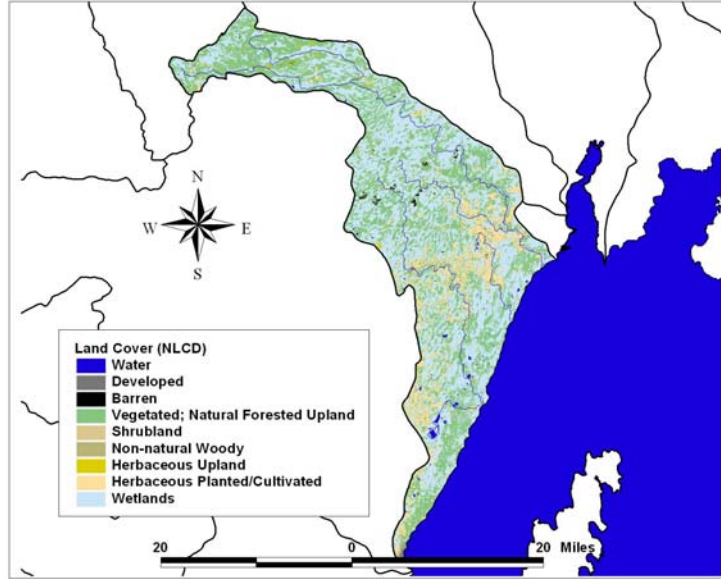
- Watershed Planning
- Great Lakes Protection
- Water Quality Protection
- Stream Restoration and Enhancement
- Aquatic Nuisance Species Monitoring and Assessment
- Water Quality Monitoring and Habitat Assessment
- Land Use Planning Tool Development
- Native Plant Restoration
- Invasive Species Monitoring and Control
- Habitat Restoration
- Land Protection (zoning and conservation easement)
- Erosion Control
- Public Education and Outreach



## Subwatersheds of the Cedar-Ford Watershed

- 0101 Twomile Creek-Ford River
- 0102 Hayes Creek-Ford River
- 0103 Headwaters North Branch Ford River
- 0104 North Branch Ford River
- 0105 Stafford Creek-Ford River
- 0106 West Branch Ford River
- 0107 Town of Northland-Ford River
- 0201 Headwaters Tenmile Creek
- 0202 Camp Creek-Ford River
- 0203 Tenmile Creek
- 0204 Town of Riverland-Ford River
- 0205 Ford River
- 0301 Sunny Brook-Frontal Green Bay
- 0302 Bark River
- 0303 Deer Creek-Frontal Green Bay
- 0401 West Branch Cedar River
- 0402 Pittsburg Creek-Cedar River
- 0403 Fortyseven Mile Creek
- 0404 Wilson Creek-Cedar River
- 0405 Advent Creek-Cedar River
- 0406 Devils Creek
- 0407 Depas Creek-Cedar River
- 0408 Big Brook
- 0409 Cedar River
- 0410 Walton River
- 0501 Fowler Creek-Frontal Green Bay
- 0502 Beattie Creek-Frontal Green Bay

Data Sources. Land cover map and percentages: National Land Cover database, 1992 ([edc.usgs.gov/products/landcover/nlcd.html](http://edc.usgs.gov/products/landcover/nlcd.html)); Land use change: NOAA Coastal Change Analysis Program, 1996 and 2001 ([www.csc.noaa.gov/crs/lca/ccap.html](http://www.csc.noaa.gov/crs/lca/ccap.html)); Total Maximum Daily Load (TMDL) Impaired Waters: Surf Your Watershed ([www.epa.gov/surf](http://www.epa.gov/surf))



### Impaired 303(d) Waters

Waterbody Name	Impairment
Green Bay (Lake Michigan)	Dioxins Fish Consumption Advisory PCB Fish Consumption Advisory Mercury (Fish Tissue)
Lake Michigan Henes Park Beach	Pathogens