

Brule River Watershed

Hydrologic Unit Code: 04030106

For more information, see the USEPA "Surf Your Watershed" website at

cfpub.epa.gov/surf/huc.cfm?huc_code=04030106 or contact the Michigan Department of Environmental Quality at 517-335-6969 to request a copy of report number MI/DEQ/WD-03/032, "A Biological Survey of the Brule, Paint, and Michigamme River Watersheds, Iron and Marquette Counties, 2002".

Watershed Management Plans

- Iron River Watershed — Iron Conservation District

Watershed Groups

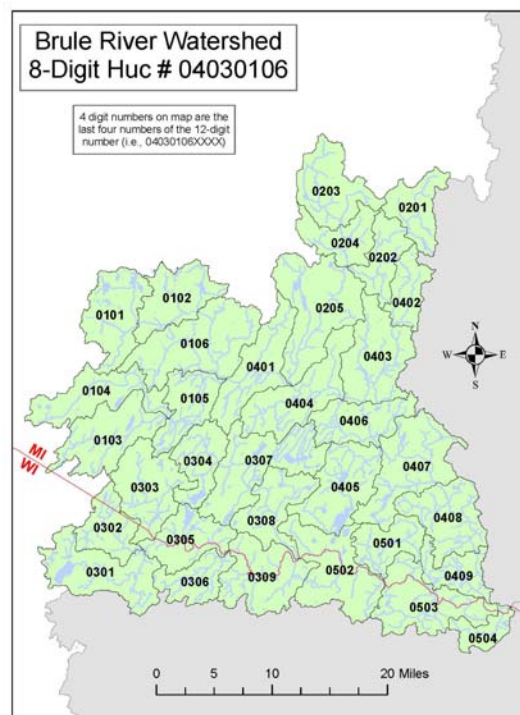
- Iron River Conservation District — www.iron.org/edc/gov-conservation.php
- Iron River Watershed Project & Council — www.ironriverwatershed.org

Watershed Overview

- Prior to the logging area, the watershed was extensively managed by Native Americans using fire to stimulate wildlife use. The name "Brule" (originally "Brulee") comes from the early French explorers means "burned woodlands."
- Extensive logging occurred in the watershed from the late 1800s to the early 1900s.
- The Ottawa National Forest is 1.7 million acres and makes up Much of the Brule River watershed .
- The Brule River watershed covers 1057 square miles and does not have any Lake Michigan shoreline.
- The Iron River in the watershed supports a naturally reproducing brook trout populations in the upper peninsula.
- 12 1/2 miles of the streams are classified as blue-ribbon trout streams.
- Forestry, wood products, and tourism are the dominant industries.
- All but one of the MDEQ watershed sampling sites had an excellent habitat rating. The one that did not had a good rating.

Watershed Activities / Concerns / Priorities

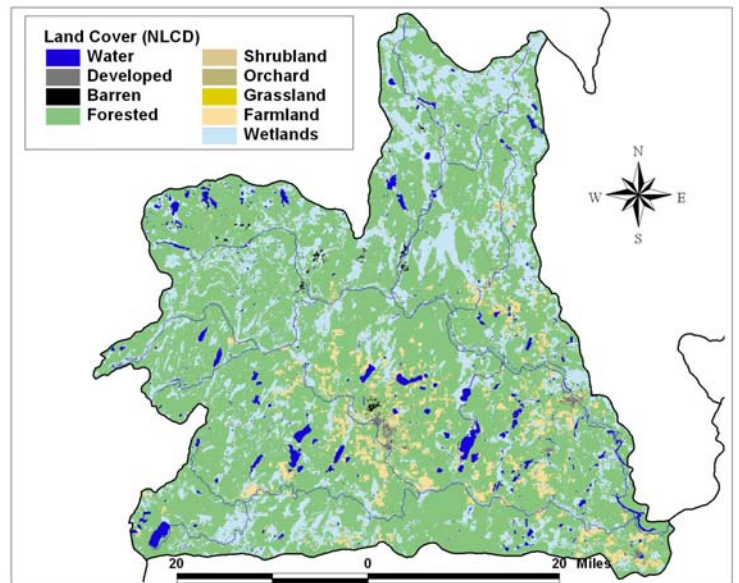
- The overall health status of the watershed is generally good.
- A limited number of point source discharges exist in the area. This includes the West iron County Sewer Authority Wastewater treatment Plant and the National Steel-Dober pit site in Caspian, and Wastewater Sewage Lagoons at Crystal Falls and Alpha.
- The Brule River watershed has an "excellent" macroinvertebrate community.
- Most of the listed impairments are related to fish consumption advisories.
- Contamination from mines has occurred, although the number has been limited. Recent fines have been applied to restoration activities on the Iron River.



Subwatersheds of the Brule River Watershed

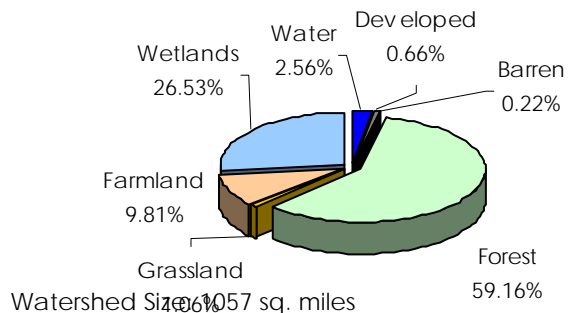
- 0101 Paint Creek-North Branch Paint River
- 0102 Winslow Creek-North Branch Paint River
- 0103 Headwaters South Branch Paint River
- 0104 Cooks Run
- 0105 South Branch Paint River
- 0106 North Branch Paint River
- 0201 Shank Lake Creek-East Branch Net River
- 0202 East Branch Net River
- 0203 Net River Flooding-West Branch Net River
- 0204 West Branch Net River
- 0205 Net River
- 0301 Brule Creek
- 0302 Elvoy Creek
- 0303 Pendleton Creek
- 0304 North Branch Iron River-South Branch Iron River
- 0305 Wilson Creek-Brule River
- 0306 Allen Creek
- 0307 Stanley Creek-Iron River
- 0308 Iron River
- 0309 Wisconsin Creek-Brule River
- 0401 Silver Creek-Paint River
- 0402 West Branch Hemlock River-East Branch Hemlock River
- 0403 Hemlock River
- 0404 Parks Creek-Paint River
- 0405 Chicagon Slough
- 0406 Peterson Creek-Paint River
- 0407 Briar Hill Creek-Paint River
- 0408 Tim Bowes Creek-Paint River
- 0409 Paint River
- 0501 Armstrong Creek
- 0502 Riley Creek-Brule River
- 0503 Brule Island Dam-Brule River
- 0504 Brule River

- Watershed activities have consisted of watershed inventories, public education, and identifying strategies to deal with nonpoint source pollution.
- An information and education campaign designed to reduce nonpoint source pollution and restore or sustain habitat and water quality, including newsletters and articles, radio and television appearances, public presentations, training workshops, road signs, interpretive signs, a website, storm drain markers, and a comprehensive brochure was created for parts of the watershed.
- Grants have been awarded for road and stream stabilization in the watershed.



Data Sources. Land cover map and percentages: National Land Cover database, 1992 (edc.usgs.gov/products/landcover/nlcd.html); Land use change: NOAA Coastal Change Analysis Program, 1996 and 2001 (www.csc.noaa.gov/crs/lca/ccap.html); Total Maximum Daily Load (TMDL) Impaired Waters: Surf Your Watershed (www.epa.gov/surf)

Land Cover: Brule River Watershed



Between 1996 and 2001, there has been a slight increase in developed land, grassland, and cultivated land and a slight decreases in forest.

Impaired (303d) Waters

Waterbody Name	Impairment
Brule River Flowage (WI)	Mercury Fish Consumption Advisory
Cable Lake (MI)	Mercury (Fish Tissue)
Chicagon Lake (MI)	Mercury (Fish Tissue)
Fortune Lake (Second Lake) (MI)	Mercury (Fish Tissue)
Kentuck Lake (WI)	Mercury Fish Consumption Advisory
Lake Emily (MI)	Mercury (Fish Tissue)
Net River (MI)	Mercury (Fish Tissue)
Ottawa River (MI)	PCB Fish Consumption Advisory
Paint River (MI)	Pathogens
Sunset Lake (MI)	Mercury (Fish Tissue)