

Boardman-Charlevoix Watershed

Hydrologic Unit Code: 04060105

For more information, see the USEPA "Surf Your Watershed" website at cfpub.epa.gov/surf/huc.cfm?huc_code=04060105 or contact the Michigan Department of Environmental Quality at 517-335-6969 to request a copy of the following reports:

- MI/DEQ/SWQ-01/135, "A Biological Survey of the Upper Boardman River and Selected Tributaries to the Boardman River"
- MI/DEQ/SWQ-02/016, "A Biological Survey of Charlevoix County Streams, Charlevoix County, Michigan, 1998."

Watershed Management Plans

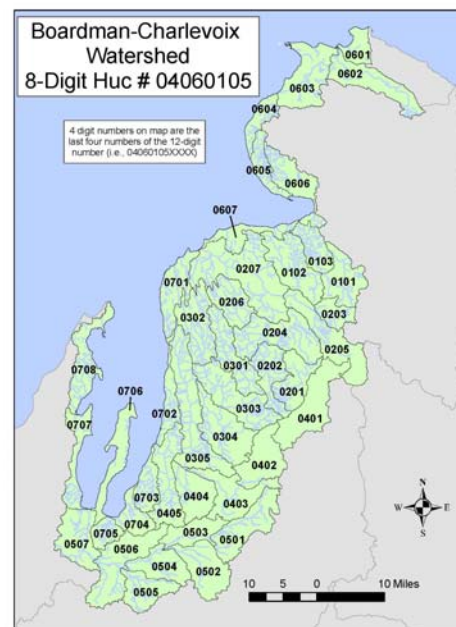
- Boardman River — Grand Traverse Conservation District
- Elk River Chain of Lakes — Antrim Conservation District
- Long Lake — Grand Traverse County Drain Commission
- Mitchell Creek — Grand Traverse County Drain Commission
- Grand Traverse Bay—Watershed Center Grand Traverse Bay
- Lake Charlevoix, Charlevoix Conservation District
- Elk River Chain of Lakes Watershed — Antrim Conservation District, Tip of the Mitt Watershed Council, Conservation Resource Alliance
- Little Traverse Bay — Tip of the Mitt Watershed Council

Watershed Groups

- Boardman River Project — www.boardmanriver.org
- Grand Traverse Conservation District — www.gtcd.org
- Grand Traverse County Drain Commission — www.grandtraverse.org
- Antrim Conservation District — www.antrimcd.org
- Charlevoix Conservation District — www.charlevoixcounty.org/cd.asp
- Tip of the Mitt Watershed Council — www.watershedcouncil.org
- Conservation Resource Alliance — www.rivercare.org
- Watershed Center Grand Traverse Bay — www.gtbbay.org
- Northwest Michigan Council of Governments — www.nwm.org
- Grand Traverse Band of Ottawa and Chippewa Indians — www.gtb.nsn.us
- Little Traverse Bay Bands of Odawa Indians — www.ltbodawa-nsn.gov

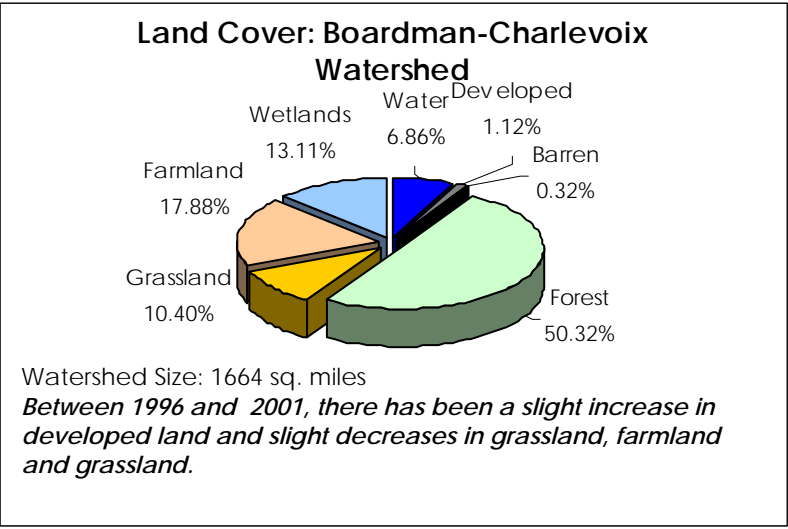
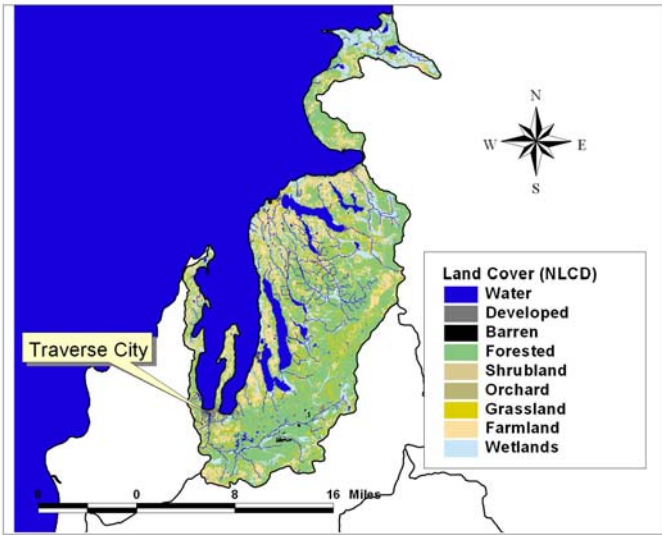
Watershed Overview

- The watershed has over 217 miles of Lake Michigan shoreline.
- Over 529 miles of streams and rivers flow year-round.
- Major waterways in the basin include the Elk River, the Boardman River, Lake Charlevoix, Little Traverse Bay, and the Carp River.
- The Grand Traverse Bay, which is part of the watershed, is one of the premier tourist and outdoor recreation regions in the State of Michigan. The Boardman River is the largest tributary to Grand Traverse Bay.
- The majority of the Boardman River is in the North Central Hardwood Forest ecoregion. The uppermost reach (about 7-8 miles) of the North Branch Boardman River is in the Northern Lakes and Forest ecoregion.
- The Boardman's well drained soils allow cold groundwater to the streams and provide for the stable stream flow.
- The Boardman River ranks among Michigan's top 10 trout streams. It contains excellent populations of brook and



Subwatersheds for Boardman-Charlevoix Watershed

- 0101 Spring Brook
- 0102 Walloon Lake-Bear River
- 0103 Bear River
- 0201 Stevens Creek-Jordan River
- 0202 Severance Creek-Jordan River
- 0203 North Branch Boyne River
- 0204 Jordan River
- 0205 Boyne River
- 0206 South Arm Lake Charlevoix
- 0207 Lake Charlevoix
- 0301 St Clair Lake
- 0302 Hanley Lake
- 0303 Cedar River-Intermediate River
- 0304 Clam Lake
- 0305 Torch Lake
- 0401 Wetzel Lake
- 0402 Headwaters Rapid River
- 0403 Rapid River
- 0404 Lake Skegemog
- 0405 Elk River
- 0501 Crofton Creek-North Branch Boardman River
- 0502 South Branch Boardman River
- 0503 North Branch Boardman River
- 0504 Brown Bridge Pond-North Branch Boardman River
- 0505 East Creek
- 0506 Jaxon Creek-North Branch Boardman River
- 0507 Boardman River
- 0601 French Farm Creek-Frontal Trails End Bay
- 0602 Carp Lake River
- 0603 Wycamp Creek-Frontal Lake Michigan
- 0604 Horseshoe Bend-Frontal Lake Michigan
- 0605 Fivemile Creek-Frontal Lake Michigan
- 0606 Roaring Brook-Frontal Lake Michigan
- 0607 Susan Creek-Frontal Lake Michigan
- 0701 McGeach Creek-Frontal Grand Traverse Bay
- 0702 Birch Lake-Frontal Grand Traverse Bay
- 0703 Petobego Pond-Frontal East Arm Grand Traverse Bay
- 0704 Acme Creek-Frontal East Arm Grand Traverse Bay
- 0705 East Branch Mitchell Creek
- 0706 Prescott Lake-Frontal Grand Traverse Bay
- 0707 Cedar Creek-Frontal West Arm Grand Traverse Bay
- 0708 Belangers Creek-Frontal Grand Traverse Bay



brown trout.

- Agriculture, tourism and recreation dominate the economy. Cherries and other fruit crops dominate agricultural production in the region.
- The watershed boasts scenic bluffs, forests, nearly a hundred inland lakes, several hundred miles of stream (including 55 miles of blue ribbon trout streams), intact wetland systems and globally rare ecosystems.
- The Boardman River watershed contains Great Lakes Beachgrass Dune, Dune Pine Forest, Great Lakes Shallow Marsh, Great Lakes Shoreline Cattail - Bulrush Marsh, Interdunal Wetland, and White Cedar - Boreal Conifer Mesic Forest.
- The watershed has baymouth/barrier beaches with bedrock nearshore, sandy beach/dunes with bedrock (resistant) nearshore, sandy beach/dunes with sand and gravel lag over clay nearshore, and sandy beach/dunes with sand/gravel nearshore.
- The watershed is home to species of Black Bear, Deer, Great Blue Heron, Lady Slippers, and Trillium.
- Waugoshance is an important Landbird stopover site, Raptor stopover site, Shorebird stopover site, and Waterfowl stopover site. It is home to Bald Eagle, Black Tern, Blackburnian Warbler, Black-throated Blue Warbler, Black-throated Green Warbler, Blue-winged Warbler, Chestnut-sided Warbler, Eastern Wood-Pewee, Least Flycatcher, Mourning Warbler, Nashville Warbler, Piping Plover, Prairie Warbler, Purple Finch, Rose-breasted Grosbeak, Ruffed Grouse, Veery, Wood Duck, Wood Thrush, Dwarf Lake Iris, Houghton's Goldenrod, and Pitcher's Thistle.

Impaired (303d) Waters

Waterbody Name	Impairment
Arbutus Lake	Mercury (Fish Tissue)
Boardman River Watershed	PCBs
Boyne River	PCB Fish Consumption Advisory
Deer Lake	Mercury (Fish Tissue)
Elk Lake	Mercury (Fish Tissue) PCB Fish Consumption Advisory
Ellsworth Lake	Mercury (Fish Tissue)
Grand Traverse Bay—East Bay State Park Beach	Pathogens
Grand Traverse Bay—Milliken Beach	Pathogens
Kids Creek	Macroinvertebrate Community Rated Poor
Lake Bellaire	Mercury (Fish Tissue)
Lake Charlevoix	PCB Fish Consumption Advisory
Torch Lake	Chlordane Fish Consumption Advisory PCB Fish Consumption Advisory Dioxin Fish Consumption Advisory Mercury (Fish Tissue)

Watershed Activities

- The Grand Traverse Bay region is currently experiencing tremendous population growth and development pressure, with a predicted 40% increase in population by 2020. Two of the three fastest growing counties in the state, Grand Traverse and Leelanau, are located within the watershed.
- Sediment and excessive nutrient loading are two of the highest priority pollutants. Other pollutants that threaten the watershed's designated uses include thermal pollution, toxins, changes in hydrologic flow, invasive species, pathogens, and loss of habitat.
- There has been a focus on streambank stabilization, bridge projects, woody debris installation for fish habitat, sand traps, and wildlife corridor work.
- Other projects have focused on management of nonpoint pollution, reducing stormwater runoff and pollution from shoreline properties; improving road/stream crossings; providing educational materials to the agricultural community; land

Data Sources. Land cover map and percentages: National Land Cover database, 1992 (edc.usgs.gov/products/landcover/nlcd.html); Land use change: NOAA Coastal Change Analysis Program, 1996 and 2001 (www.csc.noaa.gov/crs/lca/ccap.html); Total Maximum Daily Load (TMDL) Impaired Waters: Surf Your Watershed (www.epa.gov/surf)